



Installation Manual

Wireless Shore Power Sensor



Table of Contents

GETTING STARTED	3
UNPACKING.....	3
MOUNTING.....	3
TESTING THE SHORE POWER SENSOR.....	3
MAINTENANCE.....	4
TECHNICAL SPECIFICATIONS	4
SAFE DISPOSAL	4
ACTIVATION IN THE ALARM SYSTEM	5

Getting started

Congratulation with your new SuperSail product. We hope that you will be satisfied with the product and we are always available to give support in case you need it.

You can contact us at: support@super-sail.dk

Regards,

SuperSail Support Team

Please read the whole installation manual before starting the installation.

Unpacking

Before you start using the unit you must ensure that the packaging has not been broken or have been injured during transport and that the product is complete and without any visible sign of damage or strained. If this is not the case please contact SuperSail before using the product.

The wireless Shore Power Sensor is an electronic sensor, which monitor the status of the 220V shore power.

The Shore Power Sensor consist of 2 parts:

- The wireless control unit
- 220V power supply

The Shore Power Sensor is powered from 220V - no batteries are installed in the unit.

Mounting

The Shore Power Sensor is mounted using screws, Velcro or heavy two-sided tape.

The wireless control unit can be hidden behind a panel or in a cabinet.

The 220V power supply is inserted in a power outlet where there are only 220V present, when the Shore Power cable is connected to an outlet at shore.

Testing the Shore Power Sensor

When the Shore Power Sensor is installed and activated in the Alarm system, the function of the Shore Power Sensor must be tested.

The Shore Power Sensor allows short interruptions in the shore power supply, to allow for e.g. interruptions caused by someone connecting a double plug, without initiating an alarm.

Interruptions up to 5 minutes are allowed without initiating an alarm.

To test the Shore Power Sensor, do the following:

1. Connect the Shore Power Sensor and connect shore power.
2. Activate the alarm with the Shore Power Sensor enabled.
3. Wait 10 minutes to make sure no SMS alarm is received regarding shore power.
4. Disconnect shore power
5. Wait approx. 5 minutes and verify that a SMS alarm is received indicating that shore power is lost.
6. Re-connect shore power.

7. Wait a couple of minutes and verify that a SMS message is received, indication that shore power alarm has been canceled.

Fault search:

- Shore Power alarms are received despite the shore power is connected.

Verify 220V in the outlet where the Shore Power Sensor is connected.

In the SuperSail Mobil app, verify:

- The alarm is on
- ID for Shore Power Sensor is keyed in correct
- Type for sensor is "Shore Power"
- The sensor is enabled (check box set for sensor)

Maintenance

The Shore Power Sensor is maintenance free. Repairs should be carried out at an authorized service center.

Cleaning can be carried out with a soft cloth wrenched in lukewarm water.

Cleaning detergent containing solvent can harm the unit.

Technical Specifications

Radio frequency:	868.3 MHz
Typical outdoor range	100 m
Power Supply:	220/12V Power Supply
Protection:	IP54
Cabinet:	ABS
Color:	Black
Fuse:	T2,5A
Size:	87 x 57 x 39 mm (BxDxH)
Weight:	75g (Control unit ex. Power Supply)

Changes may apply.

Safe Disposal



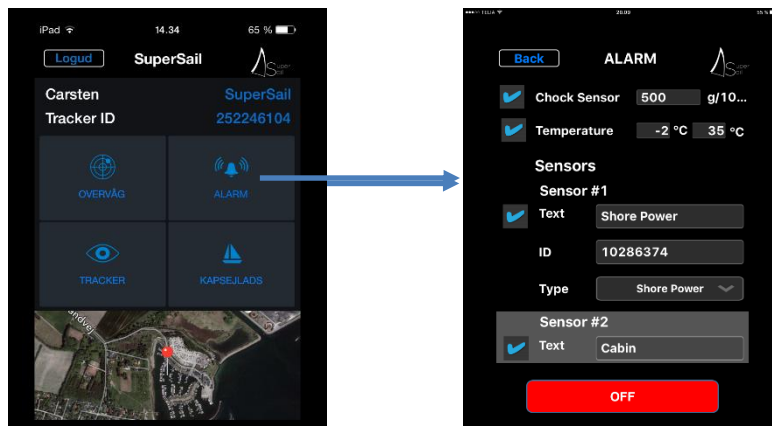
Should not be disposed a domestic waste.

Electronic equipment should be disposed according to the local regulations for electronic and electronically equipment.

Activation in the Alarm system

After installation and test, the Shore Power Sensor must be activated in the Alarm system.

This is performed via the SuperSail app, where the Shore Power Sensor is activated via the Alarm menu.



In the above example, we have decided to activate the Shore Power Sensor as sensor #1, but all sensors are available for all sensor types.

In the "Text" field you can write a short text, which identifies the installation of the Shore Power Sensor. This text will be transmitted in the Alarm SMS in case the Shore Power Sensor is activated. It is therefore important that the text identifies the individual Shore Power Sensor.

In the "ID" field, you write the ID written on the side of the Shore Power Sensor. The ID is furthermore written on the Quick Guide which follows the Shore Power Sensor. This ID is unique for the Shore Power Sensor and makes it possible for the Alarm system to separate the wireless sensors. Save the ID in case the ID should be deleted from the app and need to be re-installed later.

In the "Type" field you choose "Shore Power", which specifies that the Shore Power Sensor is of the type Shore Power sensor.

Finally the sensor is activated by ticking the field next to the "Text" field. This activates the sensor in the Alarm system. When the alarm is turned on, this sensor will be included in the alarm.

It is recommended to activate the alarm and test that an alarm SMS is sent, if the Shore Power Sensor is activated.