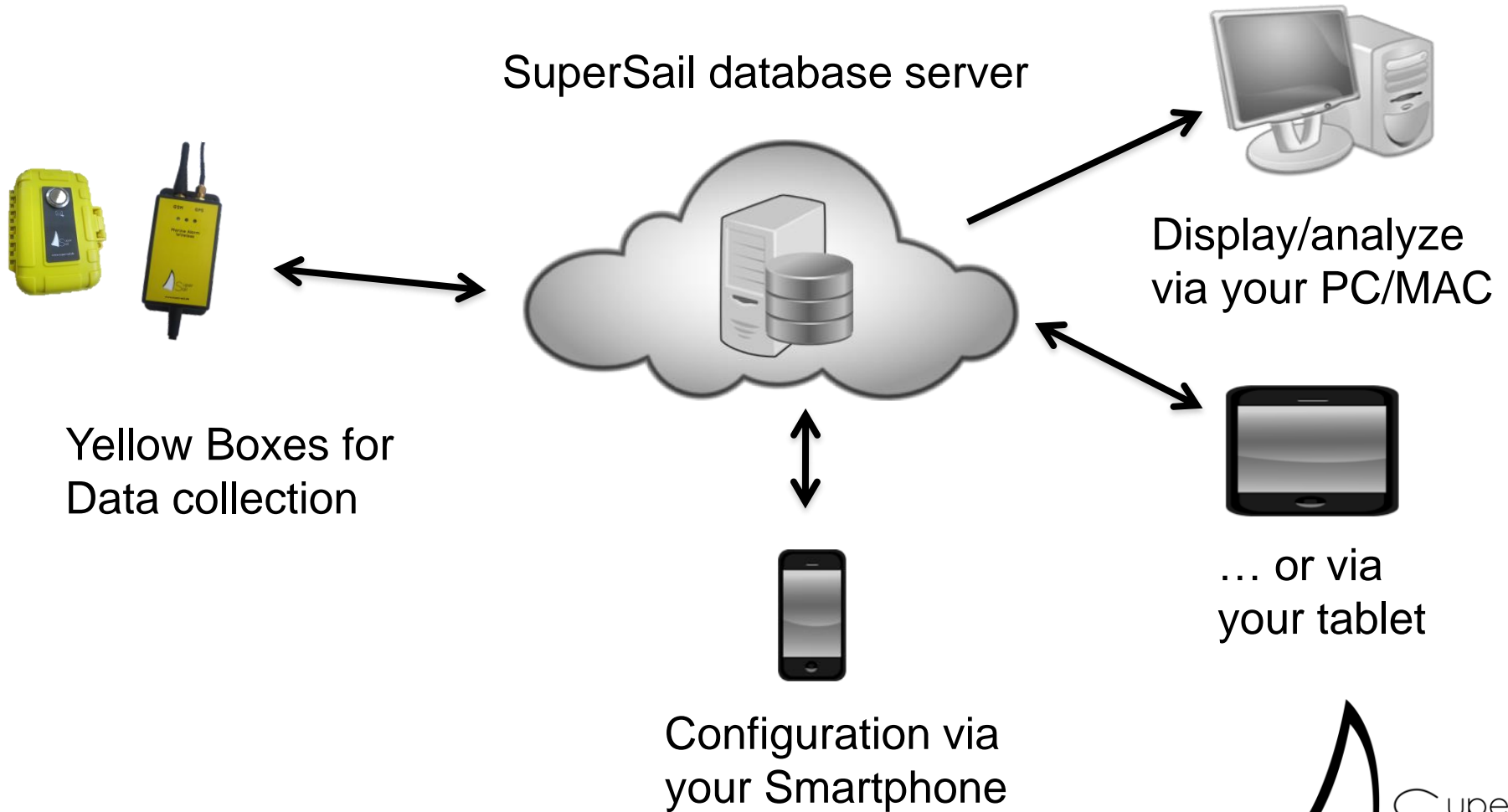


# SuperSail Platform



# SuperSail Yellow Boxes



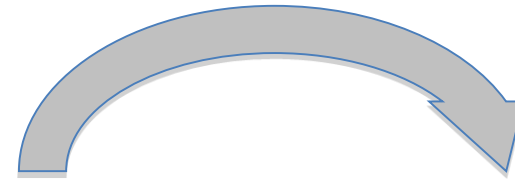
- Waterproof
- Mobile unit
- Floatable
- Rugged
- Weight: 280g



- Fixed mounted
- 12V external power
- NMEA 2000 interface
- Alarm interface
- Weight: 250g



# Safety for the sailors



- Safety via automatic surveillance
- 2 way signalling via pushbutton and lamp



# Safety for the boat

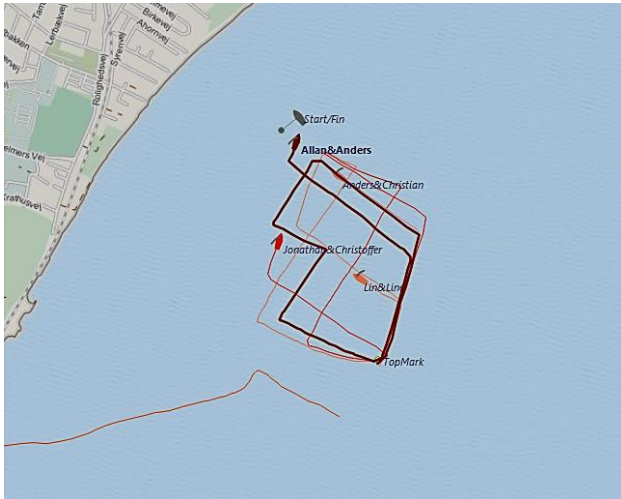


- Safety via the alarm system
- Connection of wireless sensors – e.g. water, movement
- Theft
- Anchor Guard
- Chock sensor – e.g. grounding or collision
- Outboard Engine alarm

# Performance Analyze



Points of Interest  
Remote Control



- Data collection for graphical analysis
- Comparison between competitors
- Tactical analyze
- Learning and education