

SuperSail

Marine Alarm

Installation Manual

Wireless Water Sensor



Table of Contents

| | |
|---------------------------------------|---|
| GETTING STARTED | 2 |
| UNPACKING..... | 2 |
| MOUNTING..... | 3 |
| INSTALLATION OF BATTERIES | 3 |
| AFTER INSTALLATION OF BATTERIES | 3 |
| TESTING THE WATER SENSOR | 4 |
| RESET TO FACTORY SETTINGS | 4 |
| MAINTENANCE..... | 5 |
| TECHNICAL SPECIFICATIONS | 5 |
| SAFE DISPOSAL | 5 |
| ACTIVATION IN THE ALARM SYSTEM | 5 |

Getting started

Congratulation with your new SuperSail product. We hope that you will be satisfied with the product and we are always available to give support in case you need it.

You can contact us at: support@super-sail.dk

Regards,

SuperSail Support Team

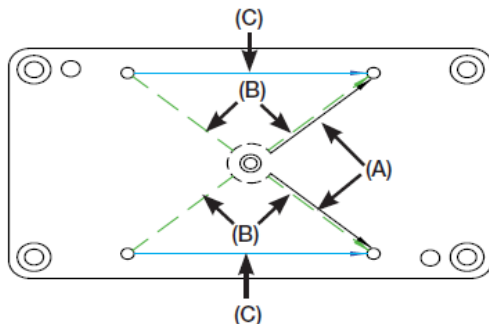
Please read the whole installation manual before starting the installation.

Unpacking

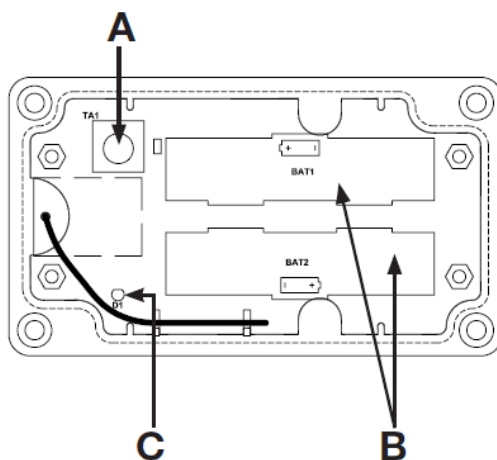
Before you start using the unit you must ensure that the packaging has not been broken or have been injured during transport and that the product is complete and without any visible sign of damage or strained. If this is not the case please contact SuperSail before using the product.

The Wireless Water sensor measures via 5 electrodes if water is present on the surface where it is installed.

The Water sensor is driven by batteries and can be places anywhere, where you want to be noticed if water is detected.



Sensor electrodes



A – Reset button

B – Battery holder, 2 pcs. 1.5-V-Mignon-Batteries (LR6/AA)

C - LED

Mounting

If the Water sensor is placed on a plane surface, even moisture will activate the sensor. It is thus possible to install it where water is not expected even in small amounts. The smallest amount of water will activate the sensor.

If the Water sensor is placed in the keel where some water can be expected, the Water sensor must be lifted from the surface.

The Water sensor is mounted using screws, Velcro or heavy two-sided tape, which allows for dismounting for exchanging batteries.

Installation of Batteries

The Water sensor use 2 x LR6/Mignon/AA batteries.

We recommend to use Alkaline batteries of good quality, to achieve long battery life time.

1. Open the Water sensor by loosening the 4 screws in the waterproof transparent cover and remove the cover carefully.
2. Loosen the 4 plastic screws which holds the cover-plate to the battery holder and remove the cover-plate carefully.
3. Install 2 pcs. batteries (LR6/AA) in the battery holder and fasten the cover-plate again using the 4 plastic screws.
4. Put the waterproof transparent cover in place and fasten using the 4 screws.



Used batteries should not be disposed a domestic waste.

Batteries should be disposed according to the local regulations for batteries

After installation of Batteries

After installing new batteries, the Water sensor will run a self-test. This will normally be finished after approx. 2 seconds.

Faultless execution of the self-test is indicated by blink with the LED: red, green and orange each turned on for 0.5 second.

If an error is discovered by the self-test, this will be indicated by blink with the red light.

| | |
|---|---|
| 1 long blink, 2 short blink, pause (repeated 2 times) | Battery level low Exchange the batteries |
| 1 long blink, 1 short blink, pause (repeated constantly) | Sensor defect Exchange the unit |

Even that the battery level is low and as long as the battery level allows for it, the Water sensor will remain active and report status to the Alarm system.

If the Water sensor is not able to send status due to low battery level, the error code will be shown again by the LED.

Testing the Water Sensor

When the Water sensor is installed and activated in the Alarm system, the function of the Water sensor must be tested.

Put the Water sensor on a wet dishcloth or similar. When the Water sensor after a few seconds register water on the dishcloth, the green LED in the sensor is turned on shortly.

After some seconds (depending on the time for SMS transfer), an Alarm SMS must be received indicating alarm from the Water sensor.

Remove the Water sensor from the wet dishcloth. When the Water sensor after a few seconds register no water, the green LED is turned on shortly.

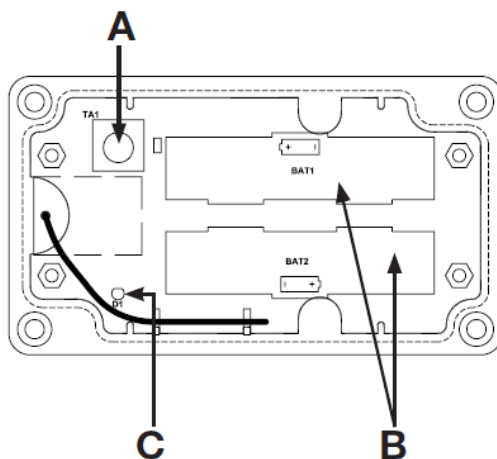
After some seconds (depending on the time for SMS transfer), an Alarm SMS must be received indicating that the alarm from the Water sensor is canceled.

Fault search:

- The green LED is not turned on when the Water sensor is wet
Remove the batteries and re-insert them – verify that they are aligned correctly. Self-test as described above under “After Installation of Batteries”, will verify if there are any faults on the Water sensor.
- LED is turned on, but SMS is not received.
Verify if the Water sensor is activated correctly in the Alarm system, as described below under “Activation in the Alarm system”
Verify that the Water sensor ID is keyed in correctly.

Reset to Factory settings

If the Water sensor for some reason does not function and the batteries have been changed without solving the problem, reset to Factory settings can be a solution to fix the problem.



1. Press and hold the button (A) for 5 seconds, until the LED (C) starts blinking slowly with red light – release the button.
2. Press and hold the button for further 5 seconds, until the LED starts blinking faster red.
3. Release the reset button to finish the reset procedure. The LED light up red in 3 seconds to confirm the reset.

The Water sensor is reset to Factory settings.

Maintenance

The Water sensor is maintenance free. Repairs should be carried out at an authorized service center.

Cleaning can be carried out with a soft cloth wrenched in lukewarm water.

Cleaning detergent containing solvent can harm the unit.

Technical Specifications

| | |
|-----------------------|---------------------------|
| Radio frequency | 868.3 MHz |
| Typical outdoor range | 100 m |
| Power | 2 pcs. 1.5V LR6/AA/Mignon |
| Battery life time | approx. 3 year |
| Protection | IP65 |
| Size | 115 x 65 x 55 (HxBxD) |

Changes may apply.

Safe Disposal



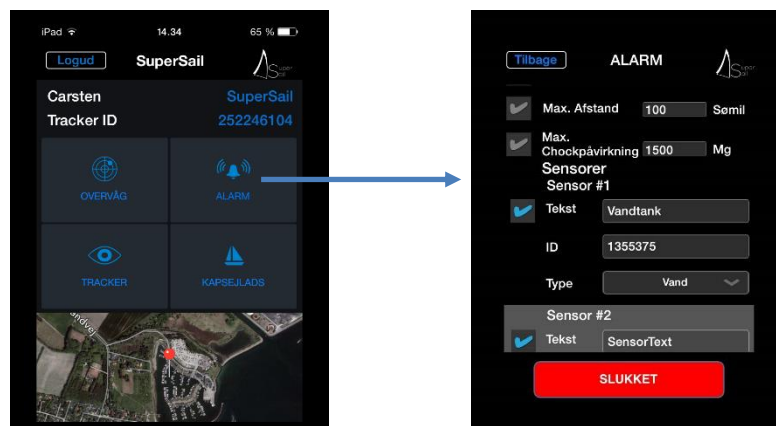
Should not be disposed a domestic waste.

Electronic equipment should be disposed according to the local regulations for electronic and electronically equipment.

Activation in the Alarm system

After installation and test, the Water sensor must be activated in the Alarm system.

This is performed via the SuperSail app, where the Water sensor is activated via the Alarm menu.



In the above example, we have decided to activate the Water sensor as sensor #1, but all sensors are available for all sensor types.

In the "Text" field you can write a short text, which identifies the installation of the Water sensor. This text will be transmitted in the Alarm SMS in case the Water sensor is activated. It is therefore important that the text identifies the individual Water sensor.

In the "ID" field, you write the ID written on the side of the Water sensor. The ID is furthermore written on the Quick Guide which follows the Water sensor. This ID is unique for the Water sensor and makes it possible for the Alarm system to separate the wireless sensors. Save the ID in case the ID should be deleted from the app and need to be re-installed later.

In the "Type" field you choose "Water", which specifies that the Water sensor is of the type Water sensor.

Finally the sensor is activated by ticking the field next to the "Text" field. This activates the sensor in the Alarm system. When the alarm is turned on, this sensor will be included in the alarm.

It is recommended to activate the alarm and test that an alarm SMS is sent, if the Water sensor is activated.